

TABLE OF CONTENTS

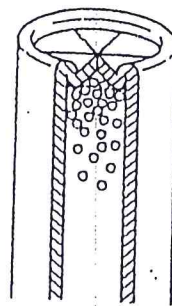
MOUNTING INSTRUCTIONS	3
TYPES OF CRIMP	3
PRE-LOADING INSTRUCTIONS	4
SELECTING A LOAD	5
OPERATING INSTRUCTIONS	6-10
ADJUSTING FOR CRIMP	11
ADJUSTING FOR CASE LENGTH	11-12
LOADING DATA	13
POWDER & SHOT BUSHING LIST	14-15

MOUNTING YOUR LOADER

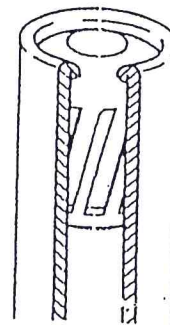
Mount your Easy Shotshell Loader on a bench, or table, of convenient height. Before drilling your mounting holes, be certain that your press is positioned close enough to the front edge of the bench as to allow full UP and DOWN movement of the operating handle. Three 3/8" bolts with washers, are adequate to firmly anchor the press. These bolts are not supplied with your loader, but they may be purchased in any hardware store. Mounting bolts must be at least 1/2" longer than the thickness of your bench or table.

To catch spent primers, a small box may be inserted under the base casting, or a large hole can be drilled completely through the bench directly under the first station. This hole will allow the spent primers to drop through into a drawer, or other receptacle.

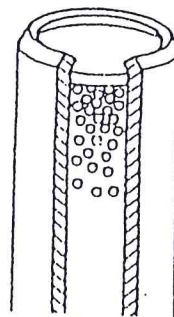
TYPES OF CRIMP



FOLD
USED ON MOST
ALL MODERN
SHOTSHELLS



ROLL
USED ON SHOTGUN
SLUGS ETC.



BEVEL
USED ON BRASS
OR ZINC CASES

As you know, there are several methods of closing the mouth of a shotshell to retain the charge. The most popular of these is the FOLD CRIMP which is used on most all modern shotshells. The Easy Standard Model Reloader for 12, 16, 20 or 28 gauge is set-up and factory adjusted to perform this type of crimp on standard 2-3/4" shells. 410 gauge loaders are adjusted to fold crimp 3" shells. There should be no need to alter this factory adjustment if standard shell lengths are to be loaded. If you should wish to load shells of a different length then a readjustment of both the Crimp Starting Head and the Crimping Die will be necessary (see page 11).

BEVEL CRIMPING on metal cases may also be used.

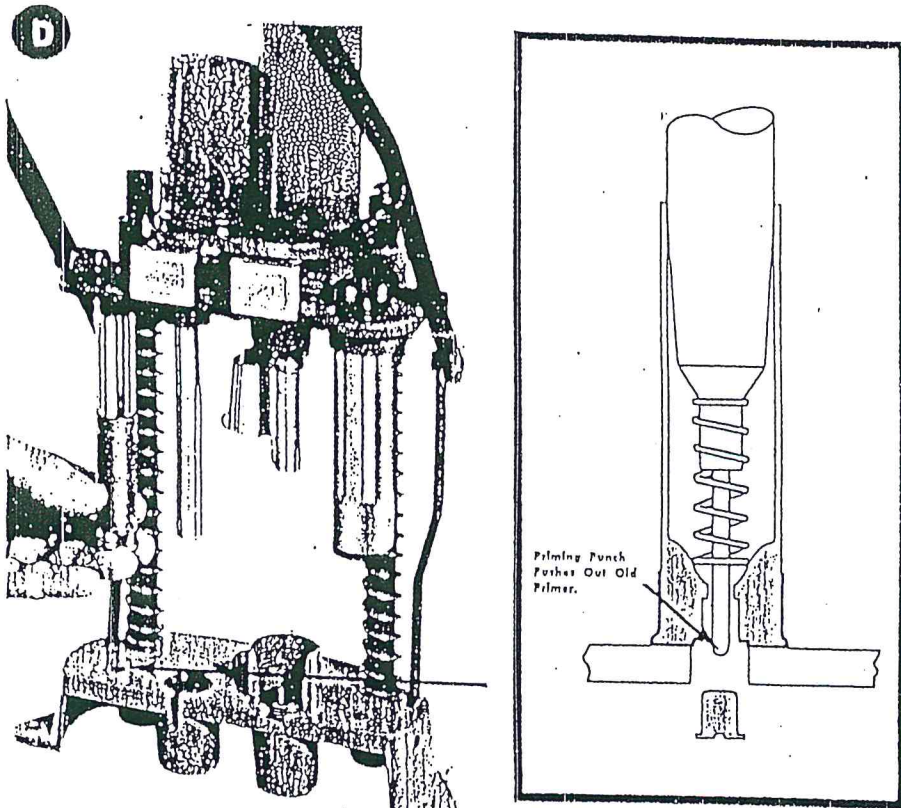
OPERATING INSTRUCTIONS FOR YOUR EASY SHOTSHELL LOADER

Your Shotshell Loader contains five basic loading stations. The following instructions relate the required operations to each of these five stations.

Until you become thoroughly familiar with the functions of each station, do not try to obtain speed. Loading speed will come naturally as you develop a rhythm to your movements. Perform the operations slowly and strive always for a consistent uniformity of motion. Now, if all your components have been checked out, let's fill up the powder and shot hoppers and commence loading.

STATION 1 (Decapping)

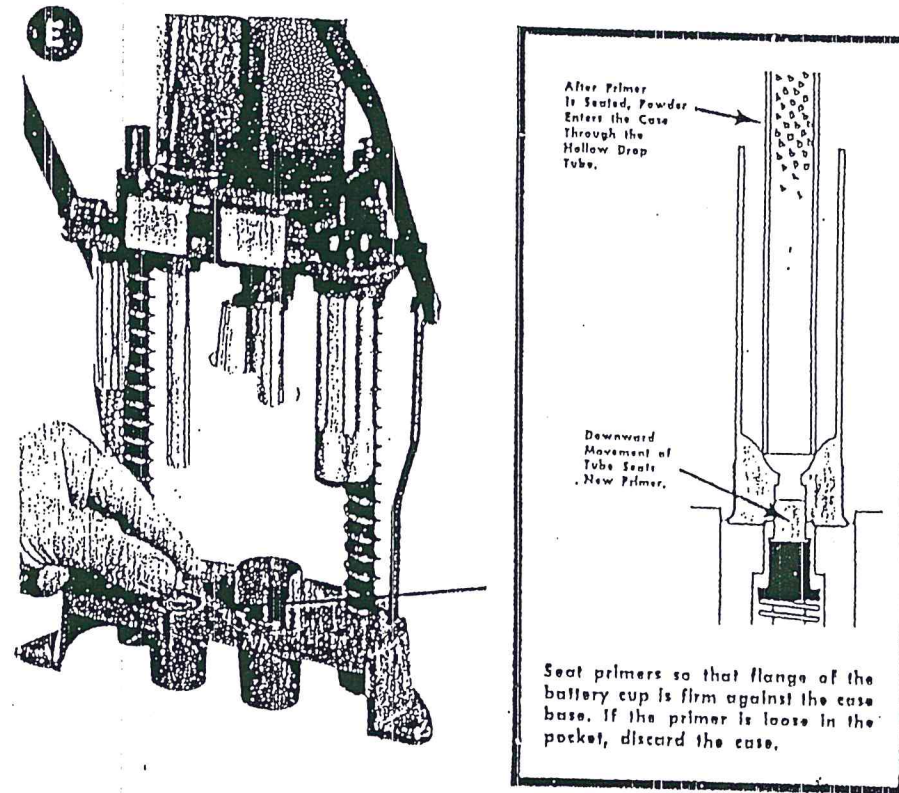
Select a fired shotshell casing and slip it up over the Decapping Punch as shown in D. Hold the casing in this position with your hand as you pull the Press Handle all the way down. The punch will carry the casing down with it expelling the spent primer from under your Press. Release the handle and remove the casing. It is ready to be primed and charged.



STATION 2 (Priming and Charging)

Select a new primer of the correct size and place it (FLANGE DOWN) into the priming base as shown in Illustration E. Place the head of your shotshell (over the primer) in the circular recess of the priming base. Note that this base is adaptable to different diameter shotshell heads. If the head of your shotshell does not fit well in the circular recess, pull out the priming base and turn it over.

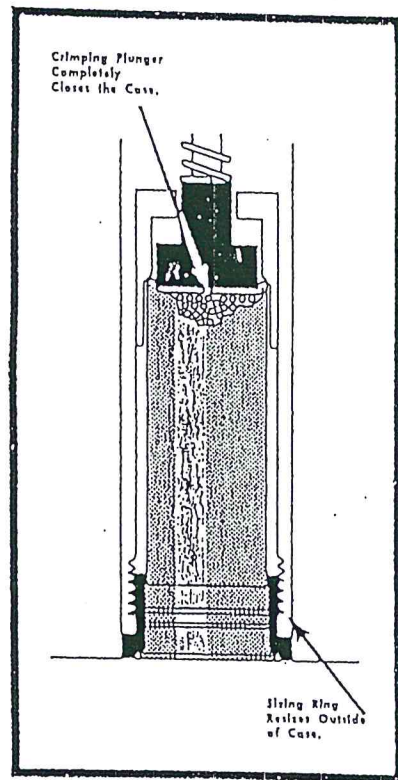
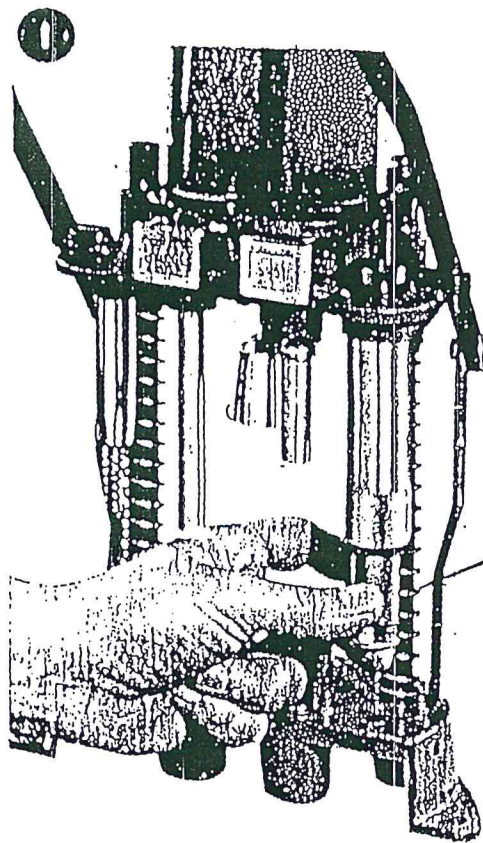
Pull your Press Handle down carefully until you feel the primer seat. Use care and do not crush the primer. Allow the handle to raise slightly before you operate the powder slide. Pull the slide out and push it in smoothly with a single stroke in each direction. DO NOT JIGGLE THE POWDER SLIDE. Now, raise your Press Handle and remove your shell. It has been primed, and charged with powder.



STATION 3 (Wadding and Shot)

Note — When first setting up your Press it may be necessary to adjust the wad pressure gauge located at this station. Illustration F shows how to adjust for wad pressure. Wad pressure is not always necessary. Use only enough wad

Slip your Shotshell UP inside the crimping and sizing die. Press it in fairly tight so that it will remain in this position (See illustration I). Pull the press handle all the way down. Allow the handle to raise slowly. Now, firmly force the press handle up so that the ejector rod (in the top of the die) contacts the ejector stop. This action will automatically free your finished shell from the die.



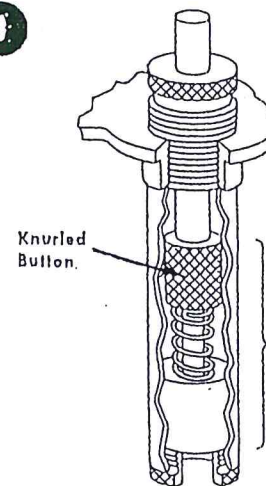
ADJUSTING YOUR FOLD CRIMPING DIE (Crimp Adjuster)

Run a shotshell through the first 4 Stations on your Press complete all of the loading sequences up to Station Five. This will furnish a sample round on which you can make the required crimp adjustments.

Place your sample round up into the sizing and crimping die, pull the Press Handles all the way down. Remove the shell and carefully check the crimp for tightness and depth.

Illustration J shows how to adjust the crimping portion of the die. The lower knurled button adjusts the depth of crimp. Turn this button counter clockwise to increase the depth of crimp. Turn this button clockwise to decrease the depth of crimp.

J



Adjusting This Length Alters the Crimp Depth. Turn Knurled Button Counter Clockwise to Increase Depth.

ADJUSTING FOR CASE LENGTH

While your standard Shotshell Loader is factory adjusted for standard length 2-3/4" shells (3" in 410 gauge) it may be necessary to readjust it for certain brands of cases as they vary somewhat in over-all lengths. A readjustment of the loader will also be necessary if you wish to load other shell lengths such as 3". To accomplish this, you must adjust both the Crimp Starter (at station 4) and the Crimping Sizing Die (at station 5).

POWDER & SHOT BUSHINGS

Easy Shotgun Reloading and Conversion Kits are furnished complete with a set of shot and powder bushings. The following is a list of bushings which are furnished as standard with Loaders, and Conversion Kits.



10 gauge H11A and HF
 12 gauge H9 and HG
 16 gauge H11 and HF
 20 gauge H5 and HD
 28 gauge H5 and HC
 410 gauge H4 and HA

A complete list of available bushings is shown below. Those who wish to vary their loads can purchase extra sets of these bushings. Loading data may be found in the Lyman Reloading Handbook.

SHOT BUSHINGS

HA — 1/2 oz.	HD — 7/8 oz.	HG — 1-1/8 oz.	HL — 1-5/8 oz.
HB — 5/8 oz.	HF — 1 oz. (also used for 2 oz. by operating shot slide twice)	HH — 1-1/4 oz.	HM — 1-3/4 oz.
HC — 3/4 oz.		HJ — 1-3/8 oz.	HO — 1-7/8 oz.
		HK — 1-1/2 oz.	

POWDER BUSHINGS (UNITS SHOWN IN GRAINS)

Bushing No.	DUPONT					ALCAN			HERCULES					HODGDON			WINCHESTER		
	700X	SR 4756	IMR 4227	AL-5	AL-7	AL-8	RED DOT	GREEN DOT	HERCO	UNIQUE	2400	TOP MARK	HS5	HS6	450	500	540		
H1	9.5	9.5	10.5	12.5	12.5	11.5	8.5	8.5	11.0	12.0	15.5	15.0	17.0	16.5	15.5				
H2	10.0	10.0	11.5	12.0	17.0	14.5	14.5	13.0	9.5	9.5	11.5	13.0	17.0	16.0	18.5	17.5	16.8 20.0 18.5		
H3	11.0	11.0	12.5	13.0	18.5	15.5	15.5	14.0	10.0	10.0	12.5	14.0	18.0	17.5	20.0	19.0	18.0 22.0 20.5		
H4	12.5	12.5	14.5	15.0	21.0	18.0	18.0	16.0	11.5	11.5	14.5	16.5	21.0	20.0	23.0	21.5	20.5 25.0 23.5		
H5	14.5	14.5	16.5	17.5	24.5	20.5	20.5	18.5	13.5	13.5	16.5	19.0	24.0	23.0	26.5	25.0	24.0 27.0		
H6	16.5	16.5	19.0	19.5	27.5	23.5	23.5	21.0	15.5	15.5	19.0	21.5	27.0	26.0	30.0	28.5	27.0 30.5		
H7	18.0	18.0	20.5	21.5	30.0	25.5	25.5	23.0	16.5	16.5	20.5	23.5	29.5	28.5	32.5	31.0	35.5 33.0		
H8	18.5	18.5	21.0	22.0	31.0	26.0	26.0	23.5	17.0	17.0	21.0	24.0	30.5	29.0	33.5	32.0	37.0 34.5		
H9	19.0	19.0	21.5	22.5	31.5	26.5	26.5	24.0	17.5	17.5	21.5	24.5	31.0	30.0	34.5	32.5	37.6 35.0		
H10	20.0	20.0	23.0	24.0	33.5	28.5	28.5	25.5	18.5	18.5	23.0	26.0	33.5	31.5	36.5	34.5	40.5 37.5		
H11	21.0	21.5	24.5	25.5	35.5	30.0	30.0	27.5	19.5	19.5	24.5	27.5	35.0	33.5	39.0	36.5	42.5 39.5		
H11A	22.0	22.0	25.5	26.5	37.0	31.0	31.0	28.0	20.5	20.5	25.5	28.5	36.5	35.0	40.0	38.0	44.5 41.0		
H12	23.5	23.5	27.0	28.0	39.5	33.5	33.5	30.0	21.5	21.5	27.0	30.5	39.0	37.0	43.0	40.5	43.5		
H13	24.0	24.0	27.5	28.5	40.5	34.0	34.0	31.0	22.0	22.0	27.5	31.5	40.0	38.0	44.0	41.5	44.5		
H14	24.5	24.5	28.5	29.5	41.0	35.0	35.0	31.5	22.5	22.5	28.5	32.0	40.5	38.5	45.0	42.5	49.5 45.5		
H15	25.0	25.0	29.0	30.0	42.0	35.5	35.5	32.0	23.0	23.0	29.0	32.5	41.5	39.5	45.5	43.0			
H16	25.5	26.0	29.5	30.5	43.0	36.5	36.5	33.0	23.5	23.5	29.5	33.5	42.5	40.5	47.0	44.5	51.0		
H17	26.5	27.0	31.0	32.0	45.0	38.0	38.0	34.5	25.0	25.0	31.0	35.0	44.5	42.5	49.0	46.0			
H18	28.0	28.0	32.0	33.5	47.0	39.5	39.5	36.0	26.0	26.0	32.0	36.0	46.0	44.0	51.0	48.0	51.5		
H19	29.5	30.0	34.5	35.5	50.0	42.0	42.0	38.0	27.5	27.5	34.5	38.5	49.5	47.0	54.5	51.5	55.0		
H20	30.5	30.5	35.0	36.5	51.0	43.0	43.0	39.0	28.5	28.5	35.0	39.5	50.5	48.0	55.5	52.5	56.5		
H21	32.5	32.5	37.5	39.0	54.5	46.0	46.0	41.5	30.0	30.0	37.5	42.0	54.0	51.5	59.5	56.0			
H22	33.0	33.5	38.0	39.5	55.5	47.0	47.0	42.5	30.5	30.5	38.0	43.0	55.0	52.5	60.5	57.0			
H23	34.0	34.5	39.5	41.0	57.5	48.5	48.5	44.0	31.5	31.5	39.0	44.5	57.0	54.0	62.5	59.0			
H24	38.0	38.0	44.0	45.5	63.5	54.0	54.0	49.5	35.0	35.0	43.5	49.5	63.0	60.0	69.5	65.5			
H25	41.0	41.5	47.5	49.0	69.0	58.5	58.5	53.0	38.0	38.0	47.0	53.5	68.5	65.0	75.5	71.5			
H26																			

Extra Shot and Powder Bushings

\$1.00 Each